



SIERRA CLUB  
FOUNDED 1892

# Calusa Digest



Vol. XXV, No. 1

Serving Southwest Florida

April, 2003

INDEX	
Second Annual Earth Day Festival!	1
Executive Committee	2
Update on Local Issues	2
Calusa Group Outings	4
Calusa Digest On-Line!	4
Florida Outings	5
Out There	7
April Meeting	8
Membership Form	8

## SECOND ANNUAL EARTH DAY FESTIVAL!

Don't miss our Second Annual Earth Day Festival on **Saturday, 19 April, at Koreshan State Park!** We will begin the day with a 2 Mile Fun Run. The race starts at 8:00 AM; sign-in at 7:30 AM. Starting at 10:00, you can enjoy music and art and food provided by the Lion's Club and Ben & Jerry's. From 10:00 AM to 3:00 PM there will be informative and entertaining environmental presentations in the Founder's Home.

Many local environmental groups will be present to share information and literature. The Lee County Election Office will be available to register you to vote and demonstrate the new electronic voting machine.

Again this year you and your family can enjoy a motorized ecotour of Estero Bay led by Weeks Fish Camp. The cost is \$10/adult and \$5/child. This year we are also pleased to have kayak ecotours offered by GAEA Guides. These are 45 minutes long and cost \$5/person. Estero River Outfitters has again generously donated kayaks for FREE self-guided rides on the beautiful Estero River.

Koreshan State Park has suspended the normal admission fee of \$3.30/vehicle.

**Admission is FREE** on the day of the festival! Enjoy this unique and historical park.

*Continued on page 7*

Want to receive notification of **Emergency Action Alerts?** Send your email address to: [bobbieleehasty@aol.com](mailto:bobbieleehasty@aol.com) You will be notified of events that require prompt action such as letters, phone calls, and emails.



## **EXECUTIVE COMMITTEE**

**Sierra Club Calusa Group**  
**27063 Allan Street**  
**Bonita Springs, FL 34135**  
**[www.sierraclub.org/chapters/fl/calusa/  
index.htm](http://www.sierraclub.org/chapters/fl/calusa/index.htm)**

Bobbie Lee Hasty, Chair  
992-9061  
bobbieleeahasty@aol.com

Mike Andoscia, Vice Chair, Responsible  
Growth Management Rep.  
561-2315  
mikeandoscia@worldnet.att.net

Karen Cartwright, FLEXCOM Rep.,  
Environmental Justice  
693-3854  
cabinwitch@earthlink.net

Meg Hutchins, Treasurer, ABM Rep.  
992-0641  
meghutchinshsd@earthlink.net

Kathleen M. "Sulli" Sullivan, Secretary,  
Newsletter Editor  
272-0474  
kathleen.sullivan@syngenta.com

Ellen Peterson, Conservation Chair  
992-5455  
fishe@strato.net

Connie Langmann, Publicity, Outings  
694-5513  
GAEAKayaks@aol.com

Wendy Ohlweiler, Outings Co-Chair  
303-0539  
wbohlweiler@msn.com

Shirley Sheehan, Membership Chair  
947-1823  
shirley.sheehan@worldnet.att.net

Patrick Nitch, Student Representative  
267-6799  
pmnitch@comcast.net

John Swingle, ExCom Member  
693-3854  
cybermerlyn@earthlink.net

*Calusa Digest is a publication of the Calusa Group of the Sierra Club and is published four times yearly. Subscription is included with Sierra Club dues or can be obtained by non-members from the Calusa Group for \$5/year.*

## **UPDATE ON LOCAL ISSUES**

Dear Environmental Supporter:  
Sierra Club Calusa Group is beginning a new segment this month to help facilitate our readers' ability to keep track of what's happening with major issues concerning Southwest Florida. For the sake of expediency, only highlights will be covered. Therefore, if you ever need details please call Meg at **992-0641**.

Conservation 2020: Lee County is holding public forums to receive input regarding the program's future on 10 April at Bonita Springs Middle School and 8 May at Public Works Center/Community Development. Calusa Group voted to ask the Board of County Commissioners to reappoint this land conservation program without requiring a referendum in order to save the cost of a vote and to avoid the risk of losing the program if it is joined to two other ballot initiatives that are also asking for tax money.

Ten-Mile Filter Marsh: Purpose: to improve the water quality of pollutant-laden runoff/discharge by 15% through treatment before reaching Estero Bay. Both commercial and residential sites for a small single piece of monitoring equipment are needed. If you know of a potential site on a body of water, especially near an outflow, please call Meg at 992-0641.

*Continued on page 3*

***Please recycle this newsletter!***

## UPDATE ON LOCAL ISSUES

*Continued from page 2*

Extension of 951 through Wetlands: The first meeting was held in a three-year public process to receive input towards an Environmental Impact Statement for this project. Developers, ecologists, and citizens participated in a process to name the issues in an effort to eventually reach consensus. Watch the media for an announcement of the second meeting. Meetings will move about Lee and Collier.

Future Health of Estero Bay: Holly Greening, director of the Tampa Bay Estuary Project was invited to speak to Agency for Bay Management (ABM) on Nitrogen Management Strategy in hopes that local regulatory agencies would consider forming a similar alliance. In Tampa the partners came together and then decided that loss of sea grass was the one target that all agencies and the public could agree on as an indicator of healthy system.

Science showed that 22% incident sunlight was needed to keep chlorophyll levels in check and sea grass beds at their 1950 status. The goals have been reached with the help of changes in Advanced Wastewater Treatment standards that reduced chlorophyll by 95%.

Today the partnership is working just as hard to hold the line because of stresses such as vast population grown and new information that airborne pollutants are negatively affecting Tampa Bay (as well as Estero Bay).

The Tampa Bay enterprise is working because all the members are working equally hard, taking initiatives and responsibility to achieve a common goal. You can help by contacting a local regulatory agency and encouraging their support.

Scientific Documentation at FGCU Library: Chuck Malenfant announced that FGCU has been compiling all scientific data and information related to ecology. This significant project will enable all of us to acquire current answers and information needed in our efforts. Please contact Chuck Malenfant at [cmalenfa@fgcu.edu](mailto:cmalenfa@fgcu.edu) with data, studies, and information that can be added to the compilation.

Corps of Engineers SWANCC Rule: Over a year ago the Supreme Court decided the Army Corps of Engineers did not have jurisdiction over isolated wetlands. For a year ABM has been writing Colonel James May asking for clarification on the essentials of this decision that conflict with other Corps policies. Fifteen local projects have already been sent letters. Permitting in accordance with the Clean Water Act is not required because of SWANCC. ABM finally received an explanation, which is important because projects such as future of DRGR, 951, Ginn Development, etc. depend on whether or not a permit from the Corps is required. ABM was informed that ditches, pipes, and similar structures DO NOT determine a wetland to be isolated. ABM is now writing Corps with documentation that the 15 projects mentioned above do meet the principles that require a permit. Calusa Group will let you know how this develops.

*Don't forget to vote in the  
Sierra Club National Election!  
The deadline is noon, 23 April.*

## CALUSA GROUP OUTINGS

Continuing with the theme "Getting to know your watershed":

We had a great walk on the CREW lands in January with Deb Hanson. We saw panther tracks and lots of other interesting stuff.

February's kayak trip to a rookery island in the Caloosahatchee River was a roaring success. Approximately 12 species were nesting on the island. We spotted many wood storks bringing in nesting material.

March's walk in the Greenbriar Swamp with Lee County Parks and Recreation Land Manager Roger Clark was very informative, full of sights, sounds and smells of spring. The swallow-tailed kites had just returned from South America and were a wonder to watch....

I will be setting up an outing for every month, so check our website or call me to find out about the next one.

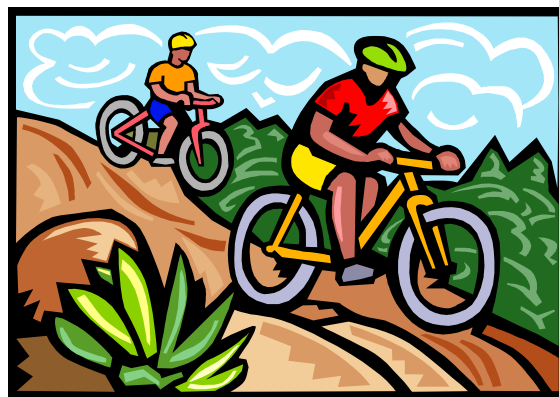
[www.sierraclub.org/chapters/fl/calusa/index.htm](http://www.sierraclub.org/chapters/fl/calusa/index.htm)

Connie Langmann, Outings Chair  
239-694-5513

5 April: Caloosahatchee Off-Road Bike Trip: Join us for an off-road bike ride through the trails of the Caloosahatchee Regional Park in Alva. The terrain is for moderate ability due to hilly and windy trails. A mountain bike and helmet are required. This bike trip will take 2-2.5 hours. Get away from the daily grind in this remote 768-acre wilderness area. Bring a picnic lunch to enjoy after the ride. Limited space. Contact by 2 April to reserve a spot. Leader: Wendy, Outings Co-Chair 239-303-0539 or [wbohlweiler@msn.com](mailto:wbohlweiler@msn.com)

## OUTINGS

1. *Arrive 10 minutes before outing to get signed in. Every effort will be made to start outings on time. Please be prompt!*
2. *A small fee will be charged for every outing. All outings are rated EASY unless otherwise specified.*
3. *IMPORTANT! Call Leader first to be sure outing is still scheduled. You don't have to be a Sierra Club Member to come to an outing. Everyone is welcome!*



## Calusa Digest On-Line!

The past and present issues of the Calusa Digest are now available for reading and printing from our website [www.sierraclub.org/chapters/fl/calusa/index.htm](http://www.sierraclub.org/chapters/fl/calusa/index.htm). A few members have requested that they not receive the newsletter in paper form, and we are in the process of setting up a system for that. Contact Sulli at **239-272-0474** or [kathleen.sullivan@syngenta.com](mailto:kathleen.sullivan@syngenta.com) if you would like to take advantage of this GREEN ALTERNATIVE. While we want to keep our members informed, we also want to save trees and money where we can.

## Florida Outings

12 April: Adopt-A-Road (Balm Boyette Scrub): Help Katasha protect a rich wilderness site. She follows the road effort with a hike through the 5,000-acre preserve. Contact: Katasha Cornwell, kgruver1@yahoo.com or 813-948-7471. (Tampa Bay)

12 April: Davie Bike and Brunch. Bike through Town of Davie horse country, an easy 6 miles through residential areas, cow pastures, nurseries, and an ancient oak hammock. We'll stop at Flamingo Gardens. Includes naturalist-led tour of Flamingo EFL site. Brunch included. 15 participants limit. Member \$10-12 TBD, non-member \$12-14 TBD. Easy. Jackie Fisher and Kip Fisher 954-434-2855. (Broward)

13 April: Bike trip in Ormond Beach, ~22 miles. John Ide, 321-868-0607 (Turtle Coast).

13 April: Fern Forest Restoration Day. Help Broward Sierra earn their rent at Fern Forest by assisting in restoring the park to its native habitat. FREE! Come prepared to have a great time and get dirty! 8:30 - 11:30 AM. Wes Baker, 954-917-7516 or Michelle Kelleher, 954-701-3778. (Broward)

12-13 April: Overnight backpack trip to Myakka River State Park, Mossy Campsite. A moderate hike of ~ 6 miles total. Limit 6. Leader: Mike Pici, revmp777@earthink.net or 727-539-0882. (Suncoast)

12-13 April: Canoe/Kayak/Camping Trip, Santa Fe River, Ichetucknee Springs. Moderate 10-mile paddle on Ginnie Springs section of the Santa Fe River Sat.; easy 4 mile paddle on Ichetucknee Springs Sun. AM. Boats can be rented locally (but will need to be transported to rivers). Camping at O'Leno State Park Fri. and Sat. nights. Mary Parrott, mparrott@tampabay.rr.com or 727-785-1272. (Suncoast)

19 April: 5 PM Horseback riding for one hour and cookout at Trails West in Loxahatchee. \$35 includes horse rental and cookout. Leisure. Limit 20. Chris Beaton, MarlinsFans@msn.com or 561-965-7859. (Loxahatchee)

19 April: Florida Trail Loop Hike. Hike Section II of the Florida Trail in Big Cypress through cypress forest, hammocks and prairie. Bring your own lunch. Member \$2, non-member \$3. Kathleen Rhoad, 954-537-9195 or Lou Serra, 954-442-0880. (Broward)

19 April: Canoe Clean Up of Turkey Creek Sanctuary in Palm Bay. Meet at the Hames Nature Center near the park entrance at 8 AM. (Port Malabar Blvd). Some canoes will be provided; you may bring your own kayak. Contact Bryan Kattwinkel, outings@turtlecoast.org or 321-729-9613. (Turtle Coast).

26-27 April: Introductory backpack and primitive camping outing in Jonathan Dickinson State Park, near Jupiter, \$5. Moderate-strenuous. Limit 6. Leader: Mark Laskowski, skowdog@att.net or 561-391-5795. (Loxahatchee)

*Continued on page 6*

## Florida Outings

*Continued from page 5*

26 April: Kayaking on Blue Cypress Lake west of Vero Beach. Paula Lechten, newsletter@turtlecoast.org or 321-984-3848. (Turtle Coast).

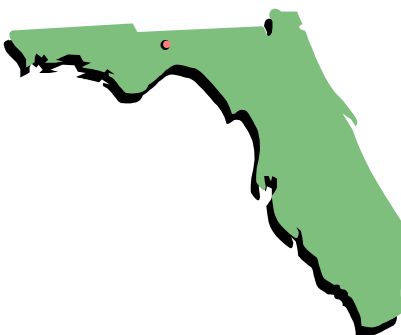
26 April: Tall Ship Cruise on Biscayne Bay, Broward Sierra Fundraiser. East/Central Dade County. Jackie Fisher and Kip Fisher, 954-434-2855. (Broward)

26 April: Finding Your Way with Map and Compass. Instruction from 10 AM until noon at the Westside Regional Park Nature Center across from the main gate of the Naval Air Station on State Route 17. Each participant must have a compass with a flat base, clothing and shoes adequate for going through off-trail woods, water, and insect repellent. Long sleeved shirts and long pants are recommended. Hand pruning shears come in handy if you have them. Please register with instructor John Trow at JohnTrow@juno.com or 904-786-7788. Registration is limited. There is no cost for the training or park admission. (Northeast)

3 May: Swim with the Dolphins. A morning outing designed for those interested in learning more about dolphins and their environment. Enter the dolphin world as a swimmer. This is a hands-on-program where you get up close and personal with the dolphins. Rain or shine. Limited to 15 participants. MUST BE PAID IN FULL NO LATER THAN 28 MARCH! Key Largo, member \$139, non-member \$144. Marti Endler, 954-704-9044. (Broward)

17 May: West Lake Kayak. A leisurely 2-hour guided kayak in the West Lake mangroves (Anne Kolb Nature Centre). Eat lunch before the trip; only refreshments provided. Beginners' outing. There will be kayaking instruction prior to the tour. Member, \$15, non-member \$19, includes park entrance fee. Easy. Tina Voci, 954-817-3352. (Broward)

25-31 May: Seven day Group Fund Raising canoe trip celebrating the Lewis and Clark expedition on the Upper Missouri River in Montana. Camp on or near the campsites of the explorers. Trip is approximately 150 miles through the designated Wilderness Section of the river. This is rated moderate, and prior extensive canoeing experience is required. The cost is \$650, which includes canoe rental with paddles, PFDs, 2 dry bags per canoe, 5 gallon water container, all transportation, 2 nights in hotels. Does not include airfare and food. Camping gear can be rented at additional charges. Trip is limited to 14 participants. Rudy Scheffer, rudy.scheffer@sierraclub.org or 727-726-8375. (Suncoast)



## OUT THERE

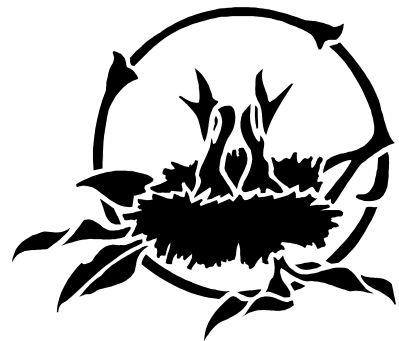
### **Some good news about nature from someone who is "out there" a lot**

Traveling in just a few inches of water near a rookery island in Estero Bay the other day, I looked down and plucked an egg out of the sea grasses. It was baby blue and about one and a half times the size of a large chicken egg. It had been hatched from, at least that's what I hope happened to the top one quarter of it! It was a great blue heron egg. What a neat find.

In and around Lover's Key State Park there are many osprey nests. I was watching one fly to its nest with a fish, probably the dad of the family, and give the fish to the three that were awaiting him, mom and two young. It is a lot of work to keep those babies fed as they attain the size of their parents in just 2 – 3 months.

Ah, Spring! These are just two of the many signs of spring popping up all around us. The smells and the sights are wonderful. I hope that you all have a happy spring season and can get 'out there' to enjoy the marvels of the outdoors.

Connie Langmann, 239-694-5513  
GAEA Guides – guided kayak nature tours



## **Earth Day Festival**

*Continued from page 1*

Don't forget to enter the raffle! There are many items you can win, including a family membership to the Calusa Nature Center, a Clyde Butcher poster, and a gift certificate for 2 nights at the beautiful Hilton Marco Island Beach Resort. The drawing will be at 2:45 PM, but you don't have to be present to win!

The Lion's Club will be hosting its annual Spring Egg Hunt at 11:00 AM. This is open to all children, with a special section for challenged children.

Proceeds from the Earth Day Festival will benefit the Greater Everglades Land Trust. So come, enjoy the day, and help us preserve beautiful Southwest Florida, for our families, for our future!

For more information, please contact Bobbie Lee Hasty, Sierra Club Calusa Group Chair, at **992-9061** or **[bobbielee\\_hasty@aol.com](mailto:bobbielee_hasty@aol.com)**.

*Come celebrate our beautiful and precious planet home!*

**MEMBERSHIP FORM**

*Yes, I want to be a member of the Sierra Club*

*Yes, I want to give a gift certificate.*

My Name \_\_\_\_\_

Address \_\_\_\_\_

City/State \_\_\_\_\_ Zip \_\_\_\_\_

Home Phone Number \_\_\_\_\_ E-Mail Address \_\_\_\_\_

I understand that a gift announcement card will be sent for my use. I've entered my name and address above and the recipient's name and address below.

Gift Recipient's Name \_\_\_\_\_

Address \_\_\_\_\_

City/State \_\_\_\_\_ Zip \_\_\_\_\_

(Check One)	Individual	Joint
INTRODUCTORY	<input type="checkbox"/> \$25	
REGULAR	<input type="checkbox"/> \$35	<input type="checkbox"/> \$43
SUPPORTING	<input type="checkbox"/> \$60	<input type="checkbox"/> \$68
CONTRIBUTING	<input type="checkbox"/> \$120	<input type="checkbox"/> \$128
SENIOR	<input type="checkbox"/> \$19	<input type="checkbox"/> \$27
STUDENT	<input type="checkbox"/> \$19	<input type="checkbox"/> \$27
LIFE	<input type="checkbox"/> \$1000	<input type="checkbox"/> \$1250

PAYMENT METHOD:  CHECK  MASTERCARD  VISA

CARDHOLDER SIGNATURE \_\_\_\_\_

CARD NUMBER \_\_\_\_\_

EXPIRATION DATE \_\_\_\_\_

Contributions, gifts, and dues to the Sierra Club are not tax-deductible; they support effective, citizen-based advocacy and lobbying efforts. Your dues include \$7.50 for a subscription to Sierra magazine and \$1.00 for your chapter newsletter.

Enclose payment information and mail to:

**SIERRA CLUB**  
P.O. Box 52968, BOULDER, CO 80322-2968 F99QV 3303 -1

Residents of Canada may remit in Canadian funds

*The Sierra Club's Statement of Purpose:*

*To explore, enjoy, and protect the wild spaces of the earth; to practice and promote the responsible use of the earth's ecosystems and resources; to educate and enlist humanity to protect and restore the quality of the natural and human environment; and to use all lawful means to carry out these objectives*

## April Meeting

The April General Meeting of Sierra Club Calusa Group will be held on Thursday, 10 April 2003, at Florida Gulf Coast University, Arts Complex, Room 111. There will be refreshments from 6:00 - 6:30 PM. At 6:30 PM Tom Wheatley of the South Utah Wilderness Alliance will present a beautiful and informative slide show on the south Utah wilderness and the efforts to save same. The EXCOM meeting will follow the General Meeting. Upon entering the University, go through the main entrance, pass the booth to a "T", turn right and go to parking lot 7. The Arts Complex is on the right.

## **General Meeting**

*Second Thursday of Every Month*

Florida Gulf Coast University, Room 111

**Next Meeting: 10 April 2003**

6:00 – 6:30 PM Socialize and Snack

6:30 PM Tom Wheatley, Southern Utah Wilderness Alliance

7:30 PM Executive Committee Meeting

*Everyone Welcome!*

**Calusa Group of Sierra Club**  
27063 Allan Street  
Bonita Springs, FL 34135

NON-PROFIT ORG.  
US POSTAGE:  
**PAID**  
FT. MYERS, FL 33919  
PERMIT NO. 767

